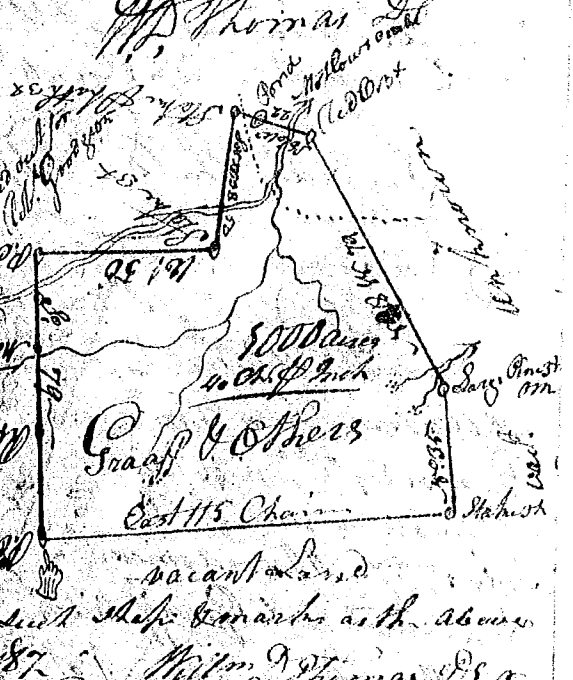


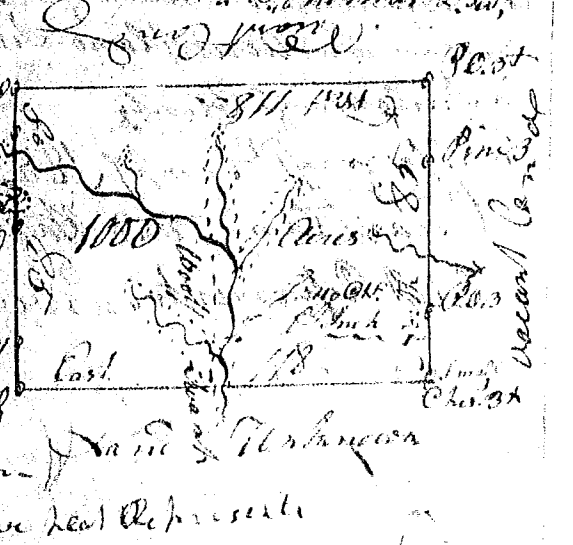
S. Carolina Pursuant to a (229) X  
 year from John Thomas Esquire  
 Commt. of Land in 96 Patent. & Sale  
 Dated the 16<sup>th</sup> July 1787. I have measured  
 & laid out unto Graaf. Sibels Land  
 & Boerselman a tract of 1000 Acres of  
 Land. Situate in the District aforesaid  
 on branches of Nelsons & Molloas Creeks  
 bounded west & southwards of middle creek  
 with Tyger River & both sides same &  
 marshy bottoms and boundaries as the  
 above plat represents to wit. the 19<sup>th</sup> July 1787



Record 8<sup>th</sup> Feb. 1788  
 State of Carolina Pursuant to a  
 warrant from John Thomas Esq. Com.  
 in 96 District No. 1000 Sale, Dated  
 the 16<sup>th</sup> July 1787 I have measured  
 & laid out unto Graaf. Sibels and  
 Boerselman a tract of One Thousand  
 Acres of Land Situate in the District  
 on Molloas Creek of S. Carolina  
 according to a line run by land survey  
 for S. Graaf & Boerselman by land  
 survey for Albert Goodson. W. by land  
 unknown all other sides with both sides  
 marshy bottoms as the above  
 plat represents. Surveyed the 19<sup>th</sup> July 1787



Record 8<sup>th</sup> Feb. 1788  
 S. Carolina Pursuant to a warrant  
 from John Thomas Esq. Com. in 96 Pat.  
 No. of Sale No. 1000 Dated the 16<sup>th</sup> July  
 1787. I have measured & laid out unto  
 Graaf. Sibels & Boerselman a tract of One  
 Thousand Acres of Land Situate in said  
 District on both sides Molloas Creek  
 of Middle Tyger River and both sides same  
 marshy bottoms and boundaries as the above plat represents



Surveyed the 19<sup>th</sup> July 1787  
 Record 8<sup>th</sup> Feb. 1788  
 John Thomas Esq.